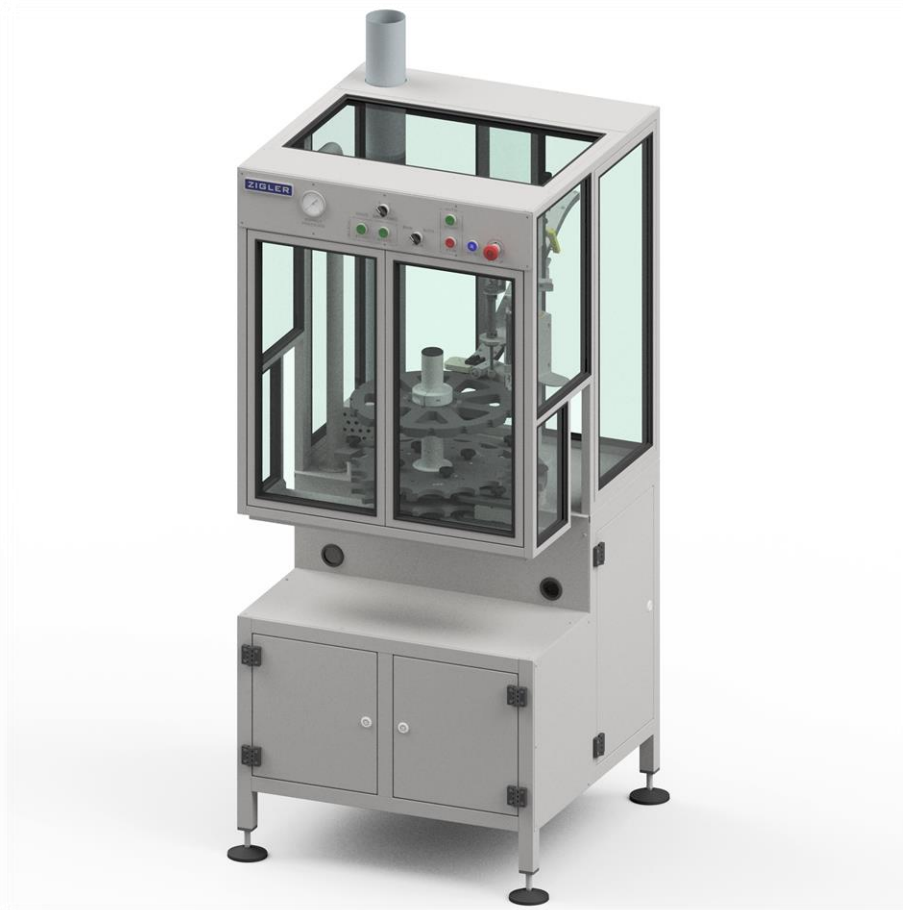
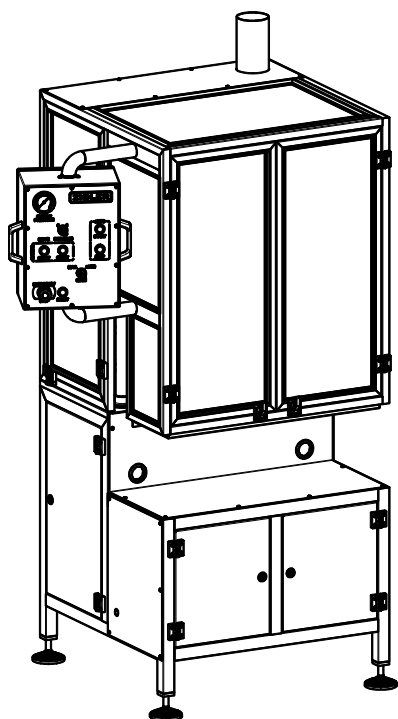


## SPRAYHEADS INSERTER TYPE: Z-1109



Sprayheads Inserter Z-1109 is a machine designed to carry out one of the final phase of the aerosol production process - an insertion of sprayhead on the aerosol valve. Sprayheads Inserter Z-1109 is designed for use with conveyor belt, thanks to specially designed geometry of indexing wheel which collects the containers straight out from the belt. Spray heads are introduced to the device using a sliding guide or by means of a dedicated conveyor directly from the cooperating auxiliary vibratory sorter.





### Operational parameters

Production capacity: 3000 – 3600 pcs/hour (50 - 60 pcs/minute)  
 Containers diameter:  $\varnothing 35$  mm -  $\varnothing 66$  mm (with the use of exchangeable equipment)  
 Containers height: 125 mm – 370 mm

### Overall dimensions and weight

Width: 1255 mm  
 Length: 1200 mm  
 Height: 2000 mm  
 Weight: ~310 kg

### Supply

Type of supply: Compressed air  
 Air supply pressure:  $0.8 \div 1.0$  MPa ( $8 \div 10$  bar)  
 Air consumption: ~10 m<sup>3</sup>/h  
 Air supply connection: External thread G $\frac{1}{2}$ "  
 Compressed air quality: 4<sup>th</sup> class according to ISO 8573-1 for temperature range  $15 \div 35^{\circ}\text{C}$

