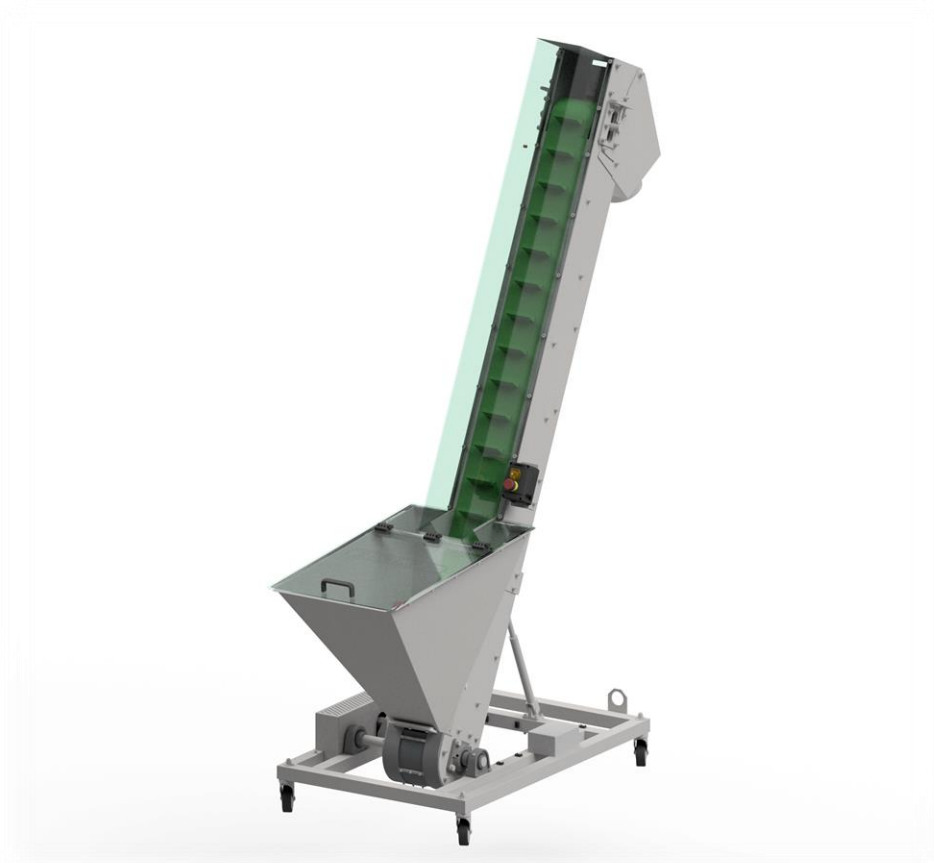


ELEVATOR TYPE: Z-4012



Z-4012 type Elevator is a machine intended for an automatic replenishment of sorting machine's hopper with small-sized semi-finished products (such as sprayheads). Elevator's large capacity hopper may be filled in cycles at long time intervals and does not require permanent operator's attention. The two machines interoperate by means of a common electronic control system.



Dimensions and weight:

Width: 695 mm
Length: 2270 mm
Height: 2570 mm
Weight: ~168

Drive system:

Motor power: 0.37 kW
Rotation: 1400 rpm
Reducer ratio: i=80

Supply:

Supply type: Electric
Supply voltage: 3x230V AC, 50Hz
Power: 0.37 kW

