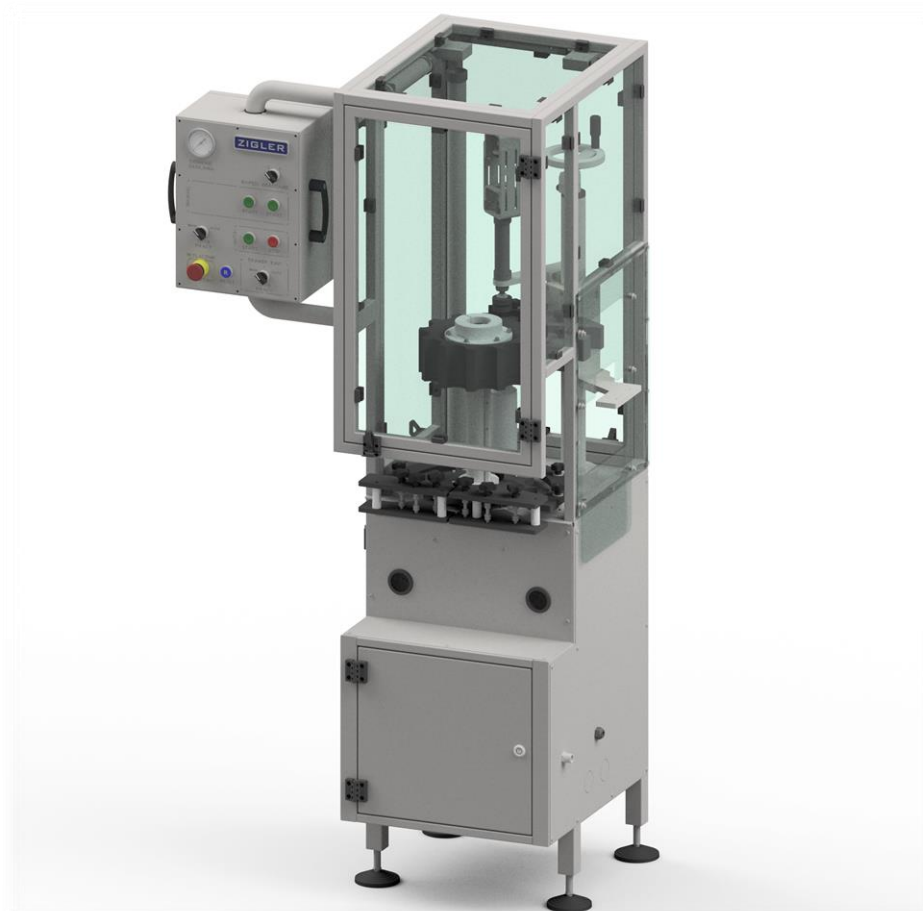
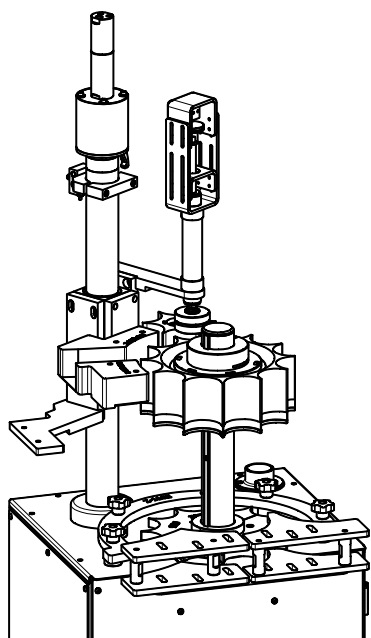


CAPS INSERTER TYPE: Z-1102



Caps Inserter Z-1102 is a machine designed to carry out one of the final phase of the aerosol production process - an insertion of Cap on the aerosol valve. Caps Inserter Z-1102 is designed for use with a conveyor, thanks to specially designed geometry of indexing wheel which collects the containers straight out from the belt.





Working parameters:

Capacity: 3000 – 3600 pcs/hour (50 - 60 pcs/minute)

Working pressure: 0.6 MPa (6 bar)

Dimensions and weight:

Width: 995 mm

Length: 675 mm

Height: 1890 mm

Weight: ~210 kg

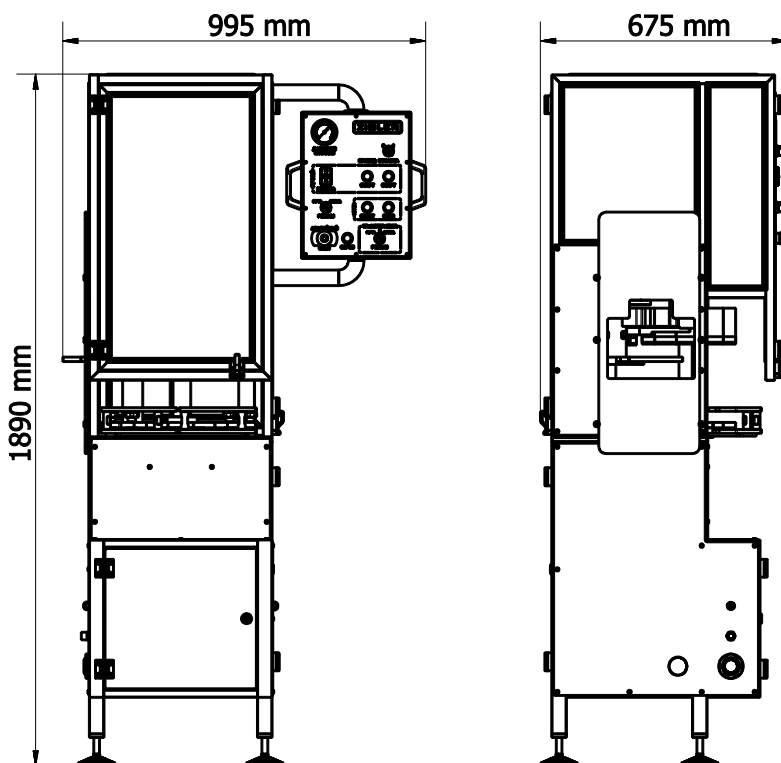
Supply parameters:

Supply type: Pneumatic

Required supply pressure: 0.8 ÷ 1.0 MPa (8 ÷ 10 bar)

Air consumption: 7 m³/h

Quality of compressed air: IV-th class (according to ISO 8573-1) for temperatures 15 ÷ 35°C



ZIGLER POLSKA Sp. z o.o.

ul. Braci Gutmanów 7

43-600 Jaworzno

POLAND

+48 32 616 36 70

biuro@zigler.pl

zigler@zigler.pl

www.zigler.pl

VAT UE: PL6772294223

REGON: 120491798

KRS: KRS nr 0000032816

Sąd Rejonowy Katowice-Wschód
w Katowicach

BANK ACC.

ING BANK ŚLĄSKI

PLN 56 1050 1360 1000 0090 3033 8132

EUR 94 1050 1360 1000 0024 0995 9893

SWIFT: INGBPLPW